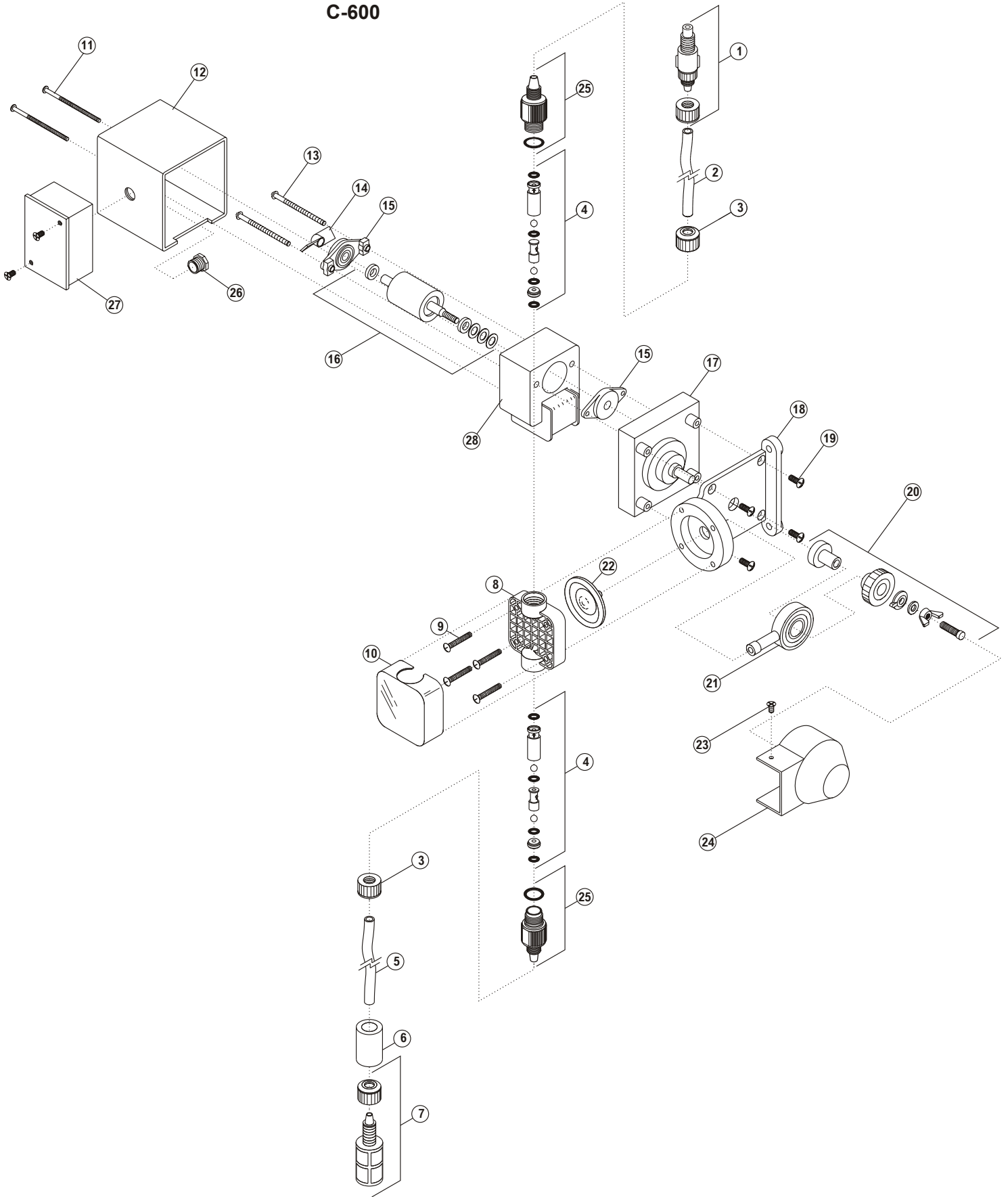


C-600



C- 600 Parts List

	<u>Catalog No.</u>	<u>Description</u>	<u>Amount Reqd.</u>
1.	C-395-6V	Injection / anti-syphon valve 6 PSI, Viton®	1
	C-395-6E	Injection / anti-syphon valve 6 PSI, EP (optional)	1
2.	C-335-6	Discharge Tubing 3/8 OD, 5ft. Opaque Poly-E	1
3.	C-330-6	Tube nut	2
4.	K-568V-4	Bullet valve (double ball), Viton®, 4 pack set	2
	K-568V-10	Bullet valve (double ball), Viton®, 10 pack set	2
	K-569E-4	Bullet valve (double ball), EP, 4 pack set (optional)	2
	K-569E-10	Bullet valve (double ball), EP, 10 pack set (optional)	2
5.	C-334-6	Suction tubing 3/8" OD, 5ft. Clear PVC w/ indicator	1
6.	C-346	Ceramic weight	1
7.	C-340V	Foot valve / strainer Poly-Pro, Viton®	1
	C-340E	Foot valve / strainer Poly-Pro, EP (optional)	1
8.	C-535	Heavy duty molded pump head	1
9.	C-504HD	Screw, HD Pump head 10-32 X 1-1/4"	4
10.	C-535FC	Pump head cover, Chem-Feed logo	1
11.	C-628	Cover Screw 6-32 X 2-3/4" Steel	2
12.	C-608P	Motor Cover	1
13.	C-625	Motor screw 8-32 X 2-1/2"	2
14.	C-612F	Rotor Fan	1
15.	C-612PB	Rotor Bearing	2
16.	C-616PN	Rotor w/ Spacers	1
17.	C-618P-14	Gearbox Assembly, 14 RPM	1
	C-618P-30	Gearbox Assembly, 30 RPM	1
	C-618P-45	Gearbox Assembly, 45 RPM	1
	C-618P-60	Gearbox Assembly, 60 RPM	1
	C-618P-125	Gearbox Assembly, 125 RPM	1
	C-618P-250	Gearbox Assembly, 250 RPM	1
18.	C-301	Motor Mount	1
19.	C-624	Motor Mount Screw 10-32 X 1/2 "	4
20.	C-325	Cam S/A C-600	1
21.	C-304	Yoke w/ Bearing	1
22.	C-406T	Diaphragm Teflon coated, EP	1
23.	90011-155	Screw 6-32 X 3/8"	1
24.	90002-201	Cam Cover	1
25.	C-560-6V	Bullet Valve Adapter, Viton® O-ring	2
	C-560-6E	Bullet Valve Adapter, EP O-ring	2
26.	90007-515	1/2" Aluminum Chase Nipple	1
27.	C-308J	Junction Box Complete w/Cover and Gasket	1
28.	C-615P-1	Stator S/A 115V / 60Hz, blue-black (lead wires)	1
	C-615P-2	Stator S/A 230V / 60Hz, red-black (lead wires)	1
	C-615P-3	Stator S/A 220V / 50Hz, brown-blue (lead wires)	1
	C-615P-4	Stator S/A 24V / 60Hz, blue-white (lead wires)	1
	C-615P-6	Stator S/A 230V / 60Hz, red-yellow (lead wires)	1
	C-615P-8	Stator S/A 220V / 50Hz, brown-yellow (lead wires)	1
	C-615P-9	Stator S/A 115V / 60Hz, blue-yellow (lead wires)	1