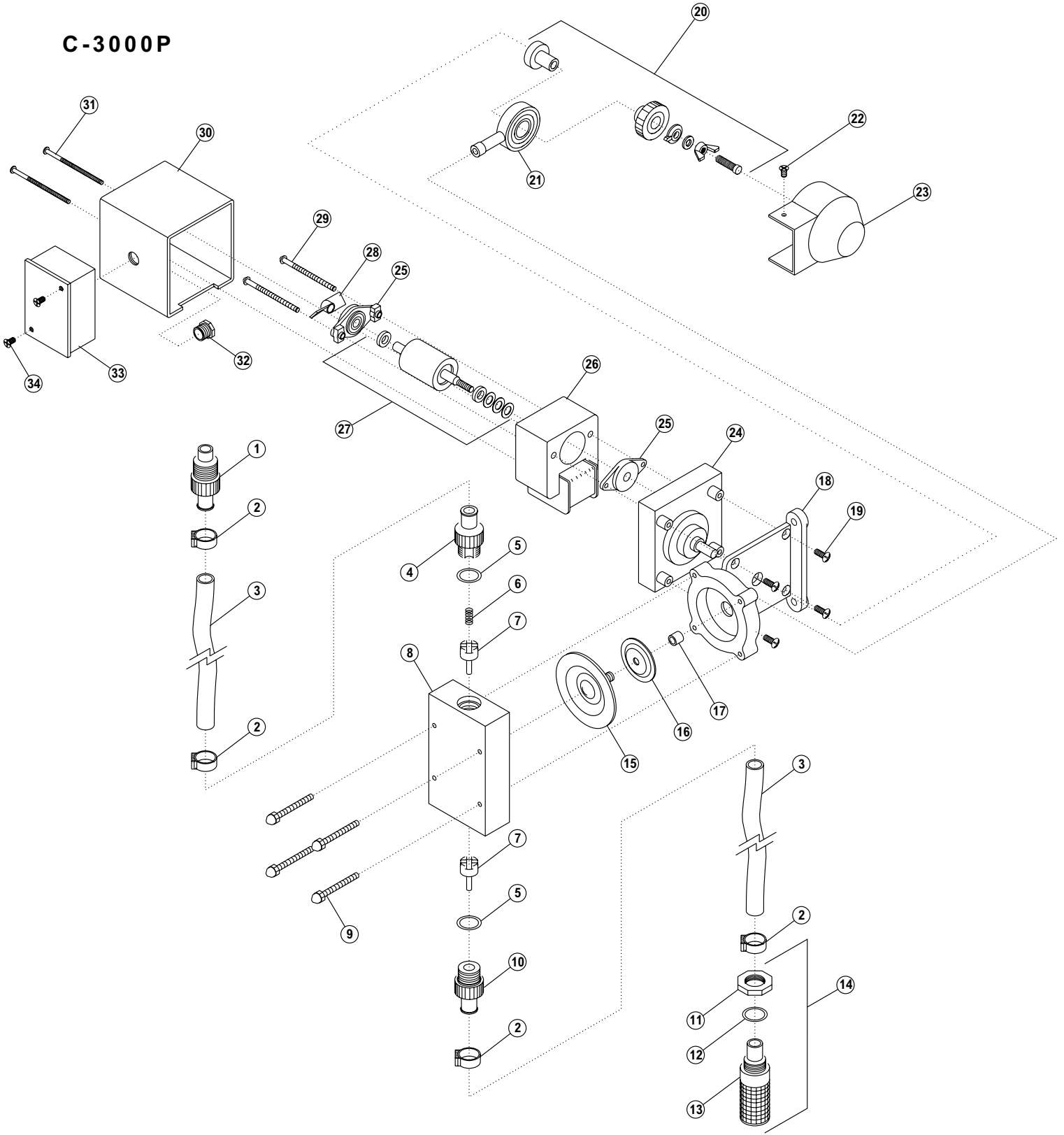


# C-3000P



## C-3000P Parts List

	<u>Catalog No.</u>	<u>Description</u>	<u>Amount Reqd.</u>
1.	C-3391-10	Injection Fitting, PVC	1
2.	90008-042	Clamp, #4, Stainless Steel (standard)	4
	C-3330	Clamp, #5, Stainless Steel	4
3.	C-334-10	Tubing 5/8" O.D. , 5 feet	2
4.	C-428-10	TopAdaptor, 5/8 Tube / PVC	1
5.	F-5012E	O-ring (EP)	1
6.	C-354-2	Spring	1
7.	C-926E	Check Valve (EP)	1
	C-926V	Check Valve (Viton)	1
8.	C-3203N-1	Head block, Acrylic	1
	C-3203N-3	Head block, Polyethylene	1
	C-3203N-4	Head block, Teflon	1
	C-3203N-6	Head block, Polypropylene	1
9.	C-3504	Screw, 10-32 X 1.5	4
10.	C427-10	Bottom Adaptor, PVC	1
11.	C-3345N	Lock Nut	1
12.	F-5012E	O-ring (EP)	1
13.	C-3373-10	Foot Strainer, PVC	1
14.	C-3393-10	Combination Foot Strainer Bulkhead, PVC	1
15.	C-3106NE	Diaphragm (EP)	1
	C-3106NT	Diaphragm (Teflon)	1
	C-3106NV	Diaphragm (Viton)	1
16.	90006-526	Aluminum Backup Washer	1
17.	76000-514	H.V. Aluminum Spacer, .350	1
18.	C-3301	Motor Mount	1
19.	C-624	Screw 10-32X1/2, Phil Pan	4
20.	C-3325	Cam Set, sub-assembly	1
21.	C-3304	Yoke and Bearing	1
22.	90011-155	Screw 6-32 X .31, Phil, Stainless Steel	1
23.	90002-201	Cam Cover, Acrylic clear	1
24.	C-618P-60	Gearbox Assembly(60 RPM)	1
	C-618P-125	Gearbox Assembly(125 RPM)	1
	C-618P-250	Gearbox Assembly(250 RPM)	1
25.	C-612PB	Armature Bearing, bracket	2
26.	C-615P-1	Motor Winding (115V-60hz), blue-black	1
	C-615P-2	Motor Winding (230V-60hz), red-black	1
	C-615P-3	Motor Winding (220V-50hz), brown-blue	1
27.	70000-027	Rotor w/ Spacers	1
28.	C-612F	Armature Fan, M30	1
29.	C-625	Motor Screw 8-32 X 2.5, Phil, Stainless steel	2
30.	C-608P	Motor Cover (Zinc), with vent	1
31.	C-628	Cover Screw 6-32 X 2.75, Phil, Stainless steel	2
32.	90007-515	1/2" Aluminum Chase Nipple, bushing	1
33.	C-308J	Junction Box, sub-assembly with cover	1
34.	90011-129	Junction Box screw 6-32 X .312, Phil flat, black	2